



We Write Challenge!





Feb 5-09:32

Question time!



1. What kind of machine can see?
2. What do you think this machine is thinking?
3. How do you think this machine has been awoken?
4. If you could control this machine, what would you do with it?
5. Apart from being a machine, what else do you think this might be?

Super Sentences!



These sentences are definitely NOT super!
Can you help?

The Eye looked around.

Carefully, the multi-coloured, glass eye
glanced quizzically at his surroundings.

*It was big and colourful. It was made
out of metal.*



Feb 4-10:53

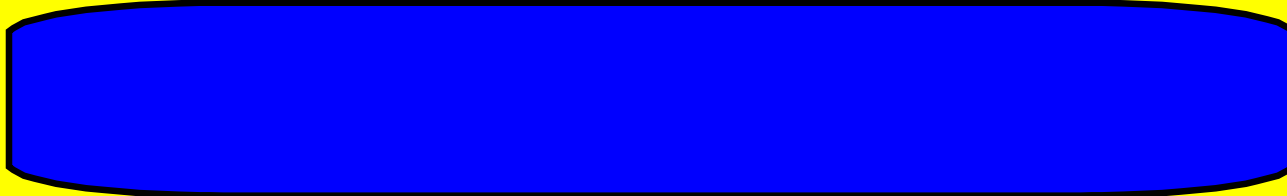
Sentence challenge!



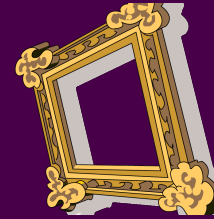
adverb

Quietly and carefully, the cogs began to turn and The Eye began to flicker.

Can you write 2 sentences that contain adverbs ?



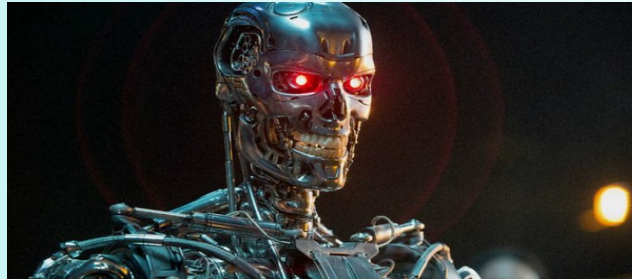
Perfect Picture Task.



Can you invent The Eye's enemy?
Draw/describe what The Eye's enemy is like.



Feb 4-11:10



★ Challenge 1- draw and describe The Eye's Enemy.

★★ Challenge 2- Why does the enemy want to defeat The Eye?

★★★ Challenge 3- Give more detail about how the enemy will defeat The Eye.
EXT: Use adverbs.

Challenge 1

- ★ green and blue body
- ★ long neck
- ★ 2 glowing yellow eyes
- ★ Wide wings which flap ferociously.



Challenge 2

Our Dragon wants to defeat The Eye because when The Eye came to life, it led an army of machines to destroy the Dragon's lair.

Challenge 3

Our Dragon has powers that can turn the cogs when he gets near to The Eye. Cautiously and quietly, Dragon swoops down and with his sharp claws, shatters the cogs which control The Eye.