



We Write Challenge!





Feb 5-09:32

Question time!



1. Who/what are these things that are approaching?
2. Are the people right to be wary?
3. Do you think the new arrivals mean harm or do they come in peace?
4. How many of them do you think there are?
5. Where have they come from?
6. Who is the character telling the story?
7. How will people deal with this 'threat'?
8. Who controls the airships?

Super Sentences!



These sentences are definitely NOT super!
Can you help?

The big scary giants were walking.

EXT: They had big hands and their eyes
were big.



Sentence challenge!



noun

relative clause

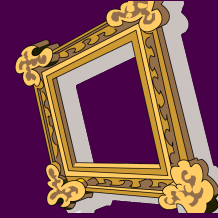
The warrior, who was nervous at the site that greeted him, gripped his spear tightly.

Can you write 2 sentences that contain a relative clause?

The horse, *who...*,

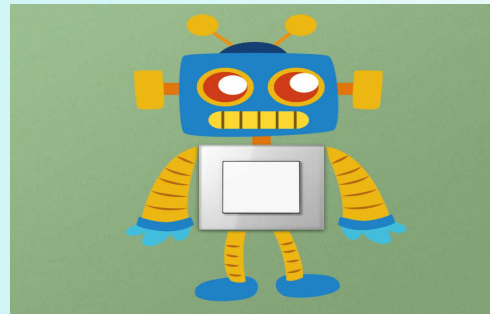
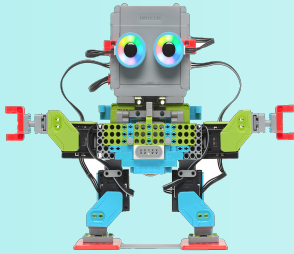
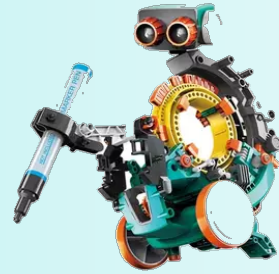
A robot, *who...*,

Perfect Picture Task.



Can you design your own giant robot? It could be friendly/helpful, or it could be evil and wicked!



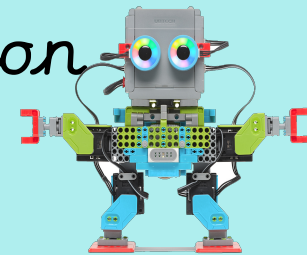


★ Challenge 1- draw and describe your robot.

★★ Challenge 2- Personality and reasons.

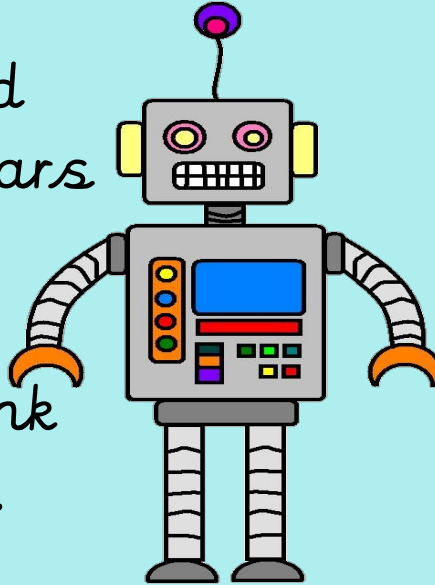
★★★ Challenge 3- Give more detail about a specific body part

EXT: Use a simile in your description



Challenge 1

- ★ square, metal head
- ★ 2 yellow, round ears
- ★ Hands that are orange.
- ★ 2 eyes that are pink and yellow circles.

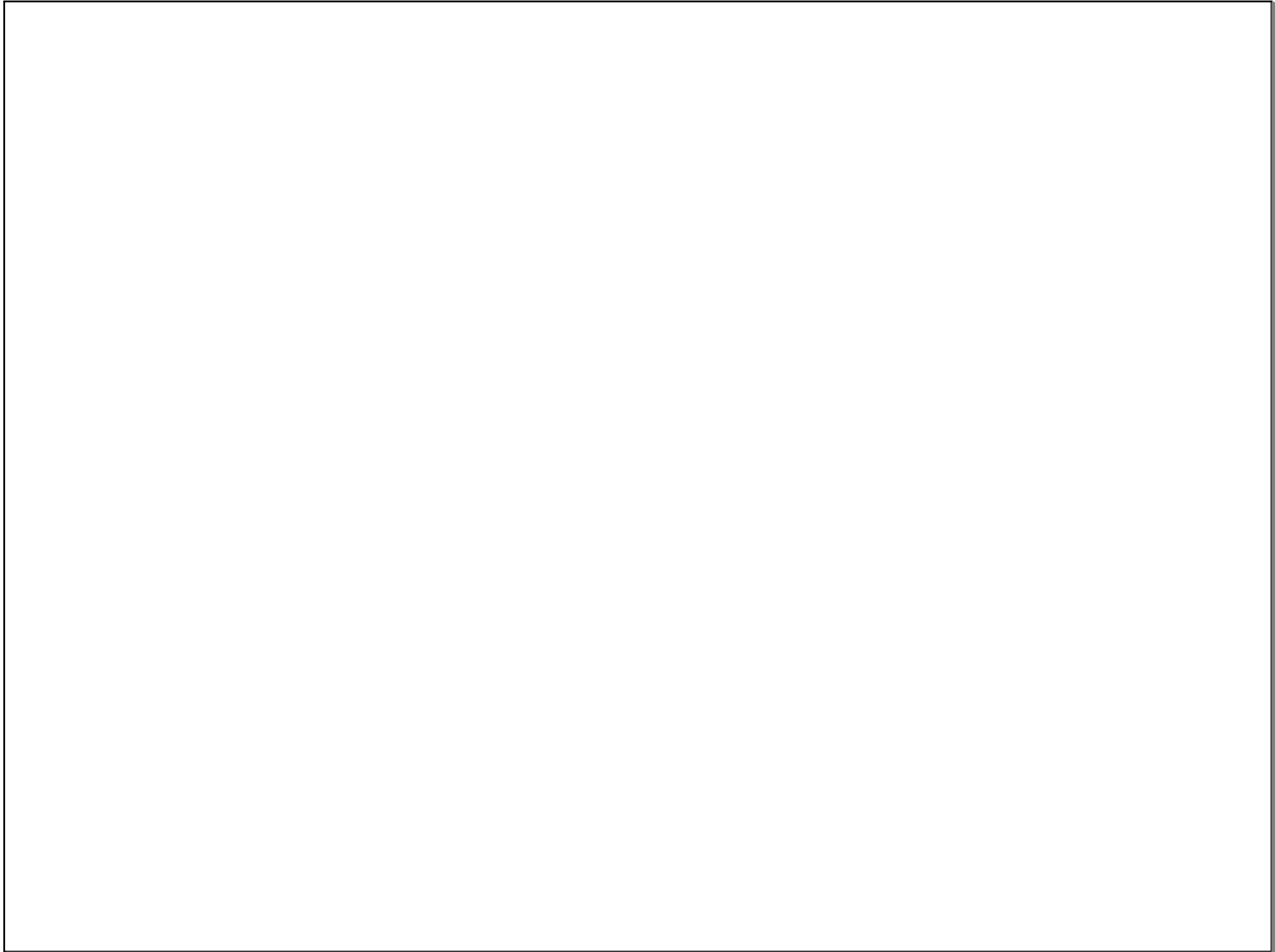


Challenge 2

Our robot is friendly to people but is scared of animals because when he was a baby robot, he got left in the lion's enclosure at Whipsnade zoo.

Challenge 3

Our robot has a screen on his body that can transport you into your favourite TV programmes with one swift push of the buttons.



Feb 5-10:07